

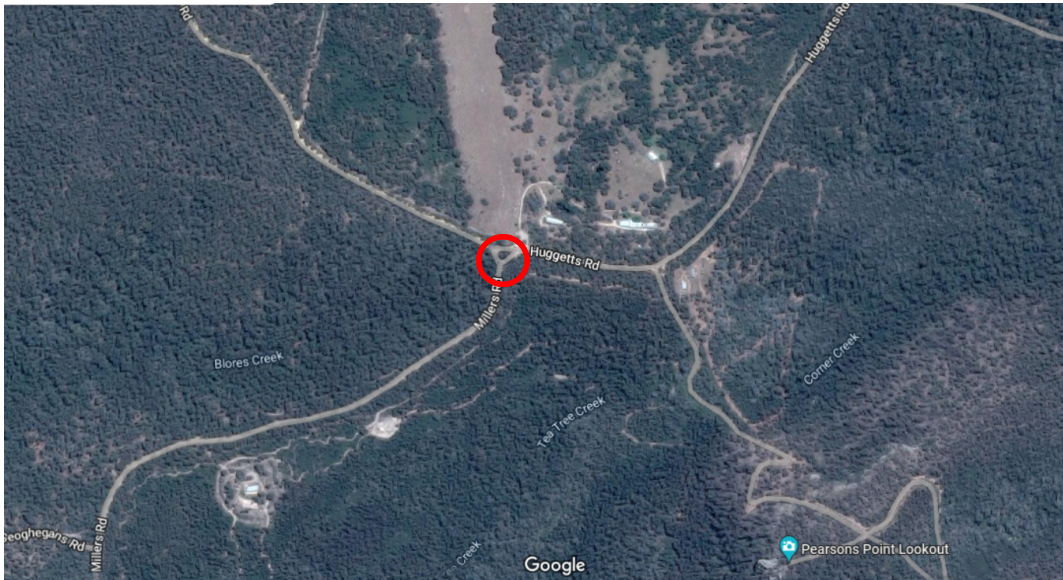
# Ben Cruachan Walking Club - Walk Preview

<b>Walk:</b>	<b>Part 1: BEN CRUACHAN SUMMIT INCLUDING SIDE TRIP TO MAGOG</b>		
<b>Area:</b>	<b>BEN CRUACHAN SCENIC RESERVE</b>		
<b>Date:</b>	<b>Sat 25<sup>th</sup> Jun 2022</b>	<b>To be publicised?</b>	<b>Yes</b>
<b>Grade:</b>	Magog: S - 6 – 7 (Involves rock scrambling)	<b>Style:</b>	Day Walk
<b>Walk Length:</b>	3km	<b>Duration:</b>	3hrs
<b>Meeting Place:</b>	Macalister Park Carpark – Maffra (Near Sugar Beet museum)	<b>Meeting Time:</b>	8:00 am
<b>Walk Summary:</b>	<p>NB: This event requires 4WD vehicles to reach our destination – <b>Use Channel 19</b>. Therefore, members with 4WD vehicles are essential for the success of this event. From the meeting point in Maffra, we will travel towards Ben Cruachan located North of Maffra in 4WD's. Before arriving at the base of Ben Cruachan we stop at a location and walk along a bush track that leads directly up towards a very rocky ridgeline with the summit of Magog located further north along the ridge. Recent reconnaissance of the area indicates that the summit of Magog, (571 metres), less than 1km from our position will be out of reach on this occasion. The summit of Ben Cruachan (836 metres) located approx. 2.5km North of our location will be visible.</p> <p><b>NB: The last 200 metres to reach the ridgeline involves walking thru thick bush with no obvious track and is very steep.</b> The ridgeline is extremely rocky so sturdy boots are recommended. After reaching the summit of a rocky outcrop we will take in the views and then return to our cars and continue to Ben Cruachan. Allow 2 - 3 hrs.</p> <p>Parking at the Junction of Ben Cruachan Road &amp; Mt Margaret Track we will then walk up a 4WD road that leads to the summit of Ben Cruachan. Prior to arriving at the summit, there is an option to head off track and follow a rocky ridgeline that leads to the summit.</p> <p>This event <b>celebrates the 57<sup>th</sup> Anniversary</b> of the Ben Cruachan Walking Club which was formed by the original foundation members of the club on the summit of Ben Cruachan back in 1965. Accordingly, we will enjoy a BBQ lunch including drinks at the summit to celebrate the occasion. Please note the BBQ lunch is dependent upon early registration of participants so that food can be ordered and organised. Otherwise, the fallback position will be BYO!!</p> <p>After lunch we will explore the summit and take in the expansive views before packing up and heading back down the mountain to return home.</p> <p>All club members are invited to celebrate this occasion <b>BUT</b> for those members who <b>are not</b> interested in scrambling towards the summit of Magog but are happy to come along for the BBQ on the summit of Ben Cruachan, Please refer to Part 2 of this Preview (below)</p> <p>RSVP the walk leaders prior to <b>Tuesday 21st June</b> to confirm your attendance.</p>		

# Ben Cruachan Walking Club - Walk Preview

<b>Walk:</b>	<b>Part 2: BEN CRUACHAN SUMMIT (WALK or 4WD)</b>			
<b>Area:</b>	<b>BEN CRUACHAN SCENIC RESERVE</b>			
<b>Date:</b>	<b>Sat 25<sup>th</sup> Jun 2022</b>	<b>To be publicised.</b>	<b>Yes</b>	
<b>Grade:</b>	Ben Cruachan: S – 4 - 3	<b>Style:</b>	Day Walk	
<b>Walk Length:</b>	3km	<b>Duration:</b>	3hrs	
<b>Meeting Place:</b>	<b>Maffra</b> (Macalister Park Carpark) – Near Sugar Beet museum <b>Or</b> for members traveling from Traralgon environs <b>Heyfield</b> (PV / DELWP depot Carpark) – Licola Rd <b>Thereafter:</b> Intersection of Millers & Huggetts Rd – <b>10:30am</b>		<b>Meeting Time:</b>	10:00 am
<b>Walk Summary:</b>	<p>NB: This event allows members to either walk or drive up to the summit of Ben Cruachan. However, please note that the drive option requires 4WD vehicles. Therefore, members with 4WD vehicles are essential for the success of this event. From the meeting point in <b>either Maffra or Heyfield</b> members will travel towards Ben Cruachan located North of Maffra in 4WD's. It is recommended that participants then regroup at the intersection <b>of Millers &amp; Huggetts Rd (use Channel 19)</b> to proceed in convoy to Ben Cruachan as the route to BC can be difficult to negotiate for first timers along this route. (Private Property signs and other intersections may prove confusing)</p> <p>Meeting up and parking at the Junction of Ben Cruachan Road &amp; Mt Margaret Track at 11:00am the two groups of participants will then walk or drive up a 4WD road that leads to the summit of Ben Cruachan. Prior to arriving at the summit, the walkers will head off track and follow a rocky ridgeline that leads to the summit.</p> <p>This event also <b>celebrates the 57<sup>th</sup> Anniversary</b> of the Ben Cruachan Walking Club which was formed by the original foundation members of the club on the summit of Ben Cruachan back in 1965. Accordingly, we will enjoy a BBQ lunch including drinks at the summit to celebrate the occasion. Please note the BBQ lunch is dependent upon early registration of participants so that food can be ordered and organised. Otherwise, the fallback position will be BYO!!</p> <p>After lunch we will explore the summit and take in the expansive views before packing up and heading back down the mountain to return home.</p> <p>All club members are invited to celebrate this occasion.</p> <p>RSVP the walk leaders prior to <b>Tuesday 21st June</b> to confirm your attendance.</p> <p style="text-align: center;"><b>Registration with the Walk Leaders is required for all walks.</b></p>			
<b>Walk Leaders:</b>	Helmut Tracksdorf Joe van Beek	<b>Email:</b>	<a href="mailto:helmut.tracksdorf@bigpond.com">helmut.tracksdorf@bigpond.com</a> <a href="mailto:joevanbeek@bigpond.com">joevanbeek@bigpond.com</a>	<b>Phone:</b> 0402 089 404 0411 749 799





Recommended meeting point for 4WD participants coming from Heyfield and/or Maffra  
Intersection of Millers Rd & Huggetts Rd (Use Channel 19 for communications)  
Noting Road beyond this point may prove confusing for 1<sup>st</sup> Timers



*Summit Cairn Ben Cruachan*



*View towards Gable End from Ben Cruachan summit*